

Detailed Specifications

| | |
|----------------------|---|
| Owner: | Mermaid Offshore Services Ltd. |
| Class: | DnV +1A1 ICE-C Supply Vessel SF HELDK DSV-III E0 DYNPOS |
| IMO No.: | 8601513 |
| Call Sign: | 3EQK5 |
| Built: | 1987, Dannebrog Vaerft A/S Yard, Aarhus, Denmark |
| Registered Port: | Panama |
| Flag: | Panama |
| GRT: | 4,294T |
| Hull Dimensions: | LOA 91.1m, B 18.0m, D (moulded) 8.0m |
| Draft (minimum): | 5.5m |
| Fuel Oil Capacity: | 1,275m ³ |
| Potable Water Cap.: | 498m ³ |
| Water Makers: | 2 x 10T/day |
| Main Propulsion: | 2 x 2,666 BHP Wartsila Azimuth Thrusters |
| Thrusters: | 3 x 1,110 BHP Bow Tunnel Thrusters |
| Generators: | 4 x 2,675 Kva Stromberg + 1 x 600 kva Cummins Emergency Generator |
| Accommodation: | 90 Berths (14 x 1-man, 20 x 2-man, 9 x 4-man, all cabins c/w ensuite bathrooms) |
| Clear Deck Space: | 700m ² @ 5T/m ² |
| Main Crane: | Hydralift 60T @ 8.3m, 400m Wire |
| Auxilliary Crane: | Hydralift 5T @ 10m |
| Dynamic Positioning: | Kongsberg Simrad SDP21 |
| USBL Transducer: | 1 x Kongsberg Simrad HiPap 500 + 1 x Kongsberg Simrad HiPap 350 |
| Helideck: | Rated for Sikorsky S-76 |
| Lifeboats: | 2 x GRP 40-man |
| Liferafts: | 12 x 16-man Viking |
| Rescue Craft: | Avon Searider 6.7m semi-rigid inflatable 55HP (davit-launched) |
| ROV: | Seaeye Tiger (inspection class) |
| Saturation Diving: | 16-man system rated to 230m water depth |
| Diving Bells: | 2 x 4.3m ³ with individual moonpools |
| Hyperbaric Lifeboat: | Self-propelled, 16 divers + 4 crew |
| Dive Gas Storage: | 33 x 449.6m ³ , below Main Deck |
| Communications: | Computer Network, 24hrs VSAT telephone, email and internet |

All vessel details are presented herein in good faith and are believed to be correct at time of publication. Vessel specifications are subject to change without notice. Revision date 5th March 2010.



MERMAID COMMANDER

DP2 Saturation Diving Support Vessel

General Description

Mermaid Commander is a purpose-built DP2 DSV with diesel-electric propulsion. *Mermaid Commander* has excellent weather operability characteristics. The vessel features a fully built-in and classed 16-man twin bell saturation diving system rated to 230m water depth, including a self-propelled hyperbaric lifeboat. Dive gas storage cylinders are located below main deck level, leaving all back deck space for project equipment. A 60T crane enables *Mermaid Commander* to perform light construction operations.

Mermaid Commander has an outstanding reputation for performance of diving operations worldwide, including offshore Brazil, the North Sea, and the Asia-Pacific region. Accommodation comprises 90 berths, and all cabins have ensuite bathrooms.



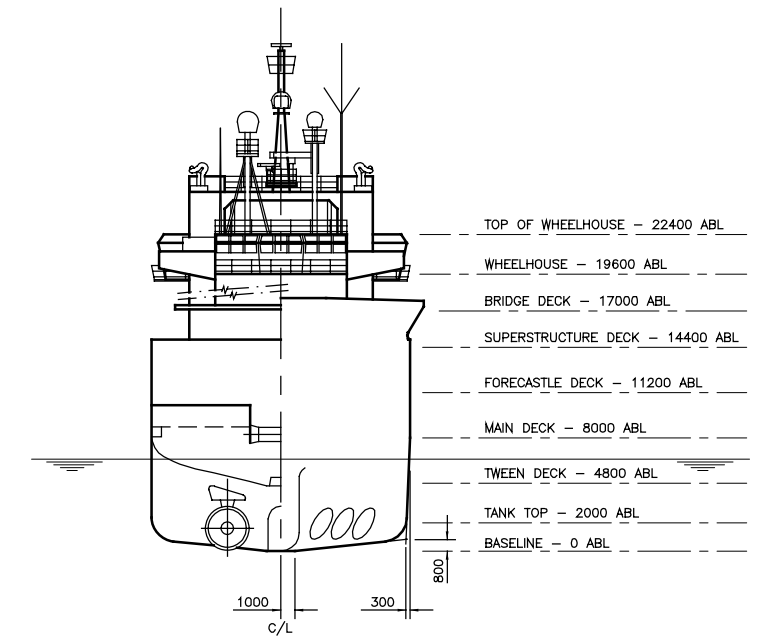
Mermaid Offshore Services Ltd. is a leading provider of Subsea Support Services to the Oil and Gas Industry. We provide diving and ROV support vessels, saturation and surface diving, ROV, subsea inspection, survey and positioning services.

Enquiries:

mos@mermaid-maritime.com

Website:

www.mermaid-maritime.com



**VIEW LOOKING AFT/
PARTIAL VIEW LOOKING F'WD**

