

## Detailed Specifications

Owner:	Mermaid Offshore Services Ltd.
Class:	DNV +1A1 Barge DYNPOS-AUTR
IMO No.:	8637031
Call Sign:	J8B2336
Built:	2002, Singapore (converted to DP2 in 2004).
Registered Port:	Kingstown
Flag:	St. Vincent and the Grenadines
GRT:	3,135t
Hull Dimensions:	LOA 85.8m, B 20.0m, D (moulded) 4.0m
Draft (maximum):	3.0m
Fuel Oil Capacity:	1,280m <sup>3</sup>
Potable Water Cap.:	840m <sup>3</sup>
Water Makers:	2 x 20t/day
Main Propulsion:	2 x 1,000 BHP azimuth thrusters
Thrusters:	1x1000 Plus 2x500 BHP Brunvoll controllable pitch bow thrusters
Generators:	3 x 335kW Scania + 1 x 150kW emergency generator
Accommodation:	135 berths plus divers in saturation (7 x 1-man, 13 x 2-man, 22 x 4-man, 2 x 7-man) (38 crew including dive technicians and catering)
Clear Deck Space:	200m <sup>2</sup>
Main Crane:	Sumitomo 76.4t @ 9.7m (static), 58.5t @ 12.0m (dynamic)
Auxilliary Crane:	2t @ 12m man-riding
Dynamic Positioning:	Kongsberg Simrad SDP21
Reference Systems:	1 x Kongsberg Simrad HiPap, 2 x DGPS, 1 x LWTW
4-Point Mooring:	4 x 5,000kg Flipper Delta anchors c/w 1,000m x 38mm diameter wire
Mooring Winches:	4 x 35t electro-hydraulic winches
Helideck:	Rated for Sikorsky S-76
ROV:	Saab Seaeye inspection class ROV
Saturation Diving:	10-man IMCA-compliant system rated to 300m water depth
Diving Bell:	1 x 3-man, 4.68m <sup>3</sup> , deployed through moon-pool
HRC:	12-man Hyperbaric Rescue Chamber with dedicated LARS
Communications:	Computer network, 24hrs VSAT telephone, email and internet

All vessel details are presented herein in good faith and are believed to be correct at time of publication. Vessel specifications are subject to change without notice. Revision date 22 November 2010.



## MERMAID SIAM

### DP2 Construction Support Vessel

## General Description

*Mermaid Siam* is a DNV Classed DP2 construction support barge.

The vessel features an IMCA-compliant 10-man single bell saturation diving system rated to 300m water depth. The 3-man diving bell is deployed through a central moon-pool.

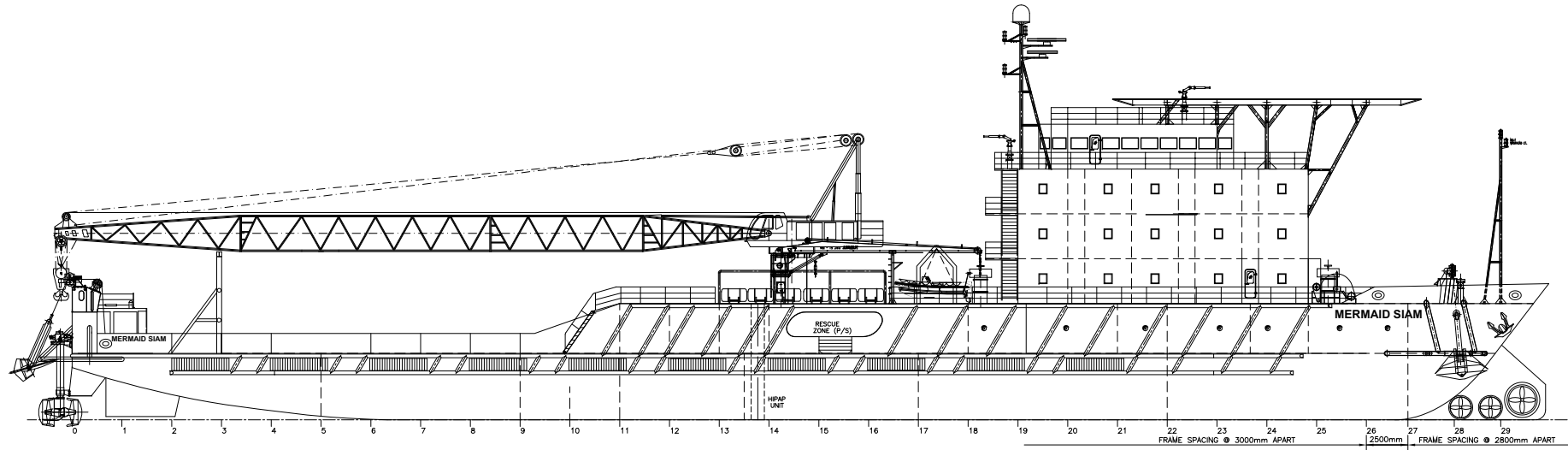
*Mermaid Siam* is equipped with a 76t lattice boom crane. Accommodation comprises 135 berths, and the vessel is equipped with a conference room, numerous offices, recreation rooms, gymnasium and hospital.



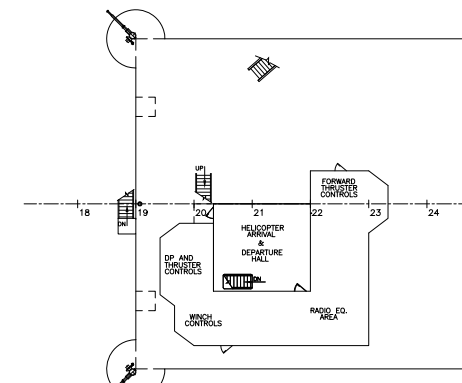
Mermaid Offshore Services Ltd. is a leading provider of Subsea Support Services to the Oil and Gas Industry. We provide diving and ROV support vessels, saturation and surface diving, ROV, subsea inspection, survey and positioning services.

**Enquiries:**  
[mos@mermaid-maritime.com](mailto:mos@mermaid-maritime.com)

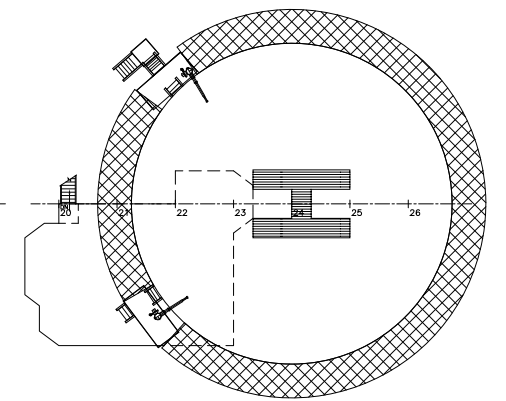
**Website:**  
[www.mermaid-maritime.com](http://www.mermaid-maritime.com)



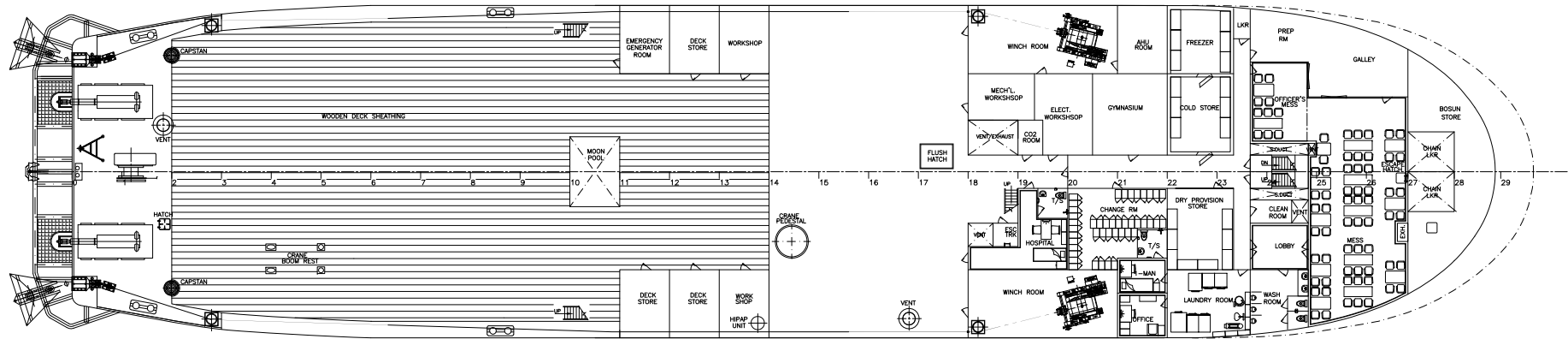
PROFILE



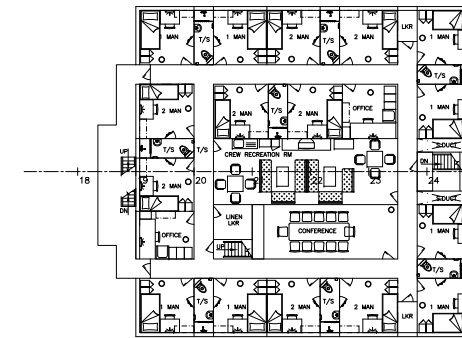
DECK LEVEL IV



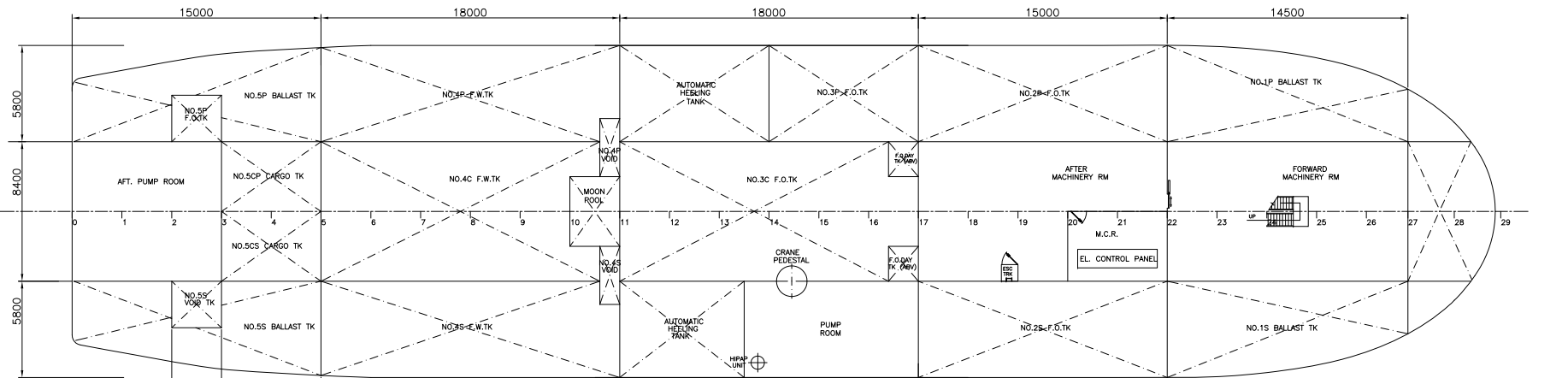
HELIDECK



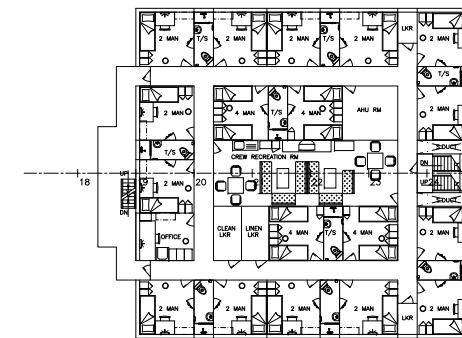
MAIN DECK



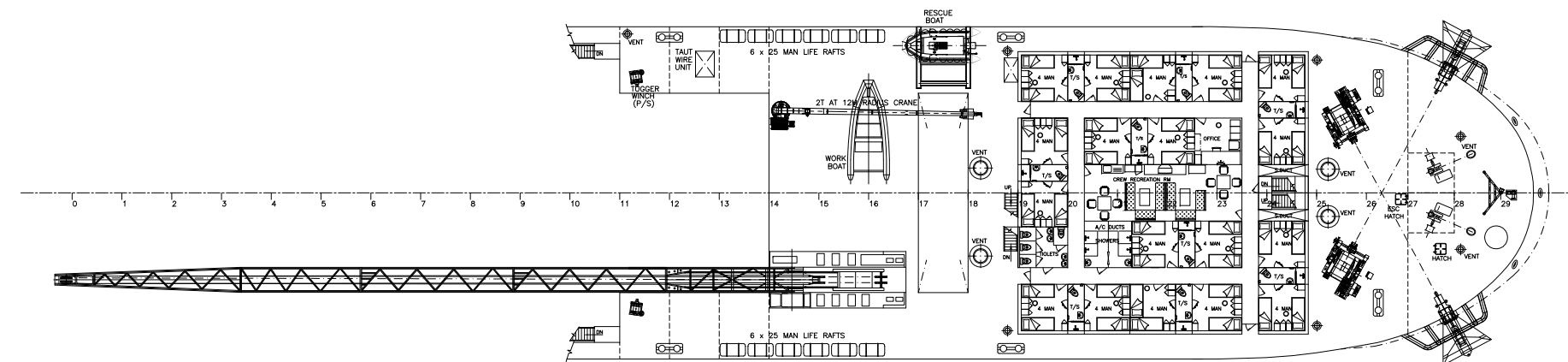
DECK LEVEL III



BELOW MAIN DECK PLAN



DECK LEVEL II



DECK LEVEL I