

## Detailed Specifications

Owner:	Mermaid Offshore Services Ltd.
Class:	DnV +1A1 Supply Vessel Basic
IMO No.:	8123016
Call Sign:	HO5124
Built:	1982, Teraoka Zosen Shipyard, Japan
Registered Port:	Panama
Flag:	Panama
GRT:	783t
Hull Dimensions:	LOA 48.7m, B 12.2m, D (moulded) 4.5m
Draft (Summer):	3.65m
Fuel Oil Capacity:	495m <sup>3</sup>
Potable Water Cap.:	234m <sup>3</sup>
Main Propulsion:	2 x Yanmar T260-ET, total 3,000 BHP
Bow Thruster:	485 BHP 3.5t thrust Schottel omni-directional cone jet
Generators:	3 x 160kW
Accommodation:	30 Berths (4 x 1-man, 3 x 2-man, 5 x 4-man) (crew 12 including catering) optional 4-man Portakabin
Clear Deck Space:	136m <sup>2</sup>
Deck Crane:	Sekigahara hydraulic telescopic crane, SWL 3.0t @12.0m
Anchoring Winches:	2 x Windlass electro-hydraulic 7.5t winches, 9.0m/minute
Anchors:	2 x 1,315kg anchors with 520m length x 32mm diameter chains
Capstan:	1 x 5.0t



## MERMAID PERFORMER

ROV, Air Diving & Survey Support Vessel

## General Description

*Mermaid Performer* is a DNV Classed utility vessel that is well-suited to ROV, air diving, survey and geotechnical operations. The vessel has a 3t crane and an omni-directional bow thruster, and accommodation comprises 30 berths.

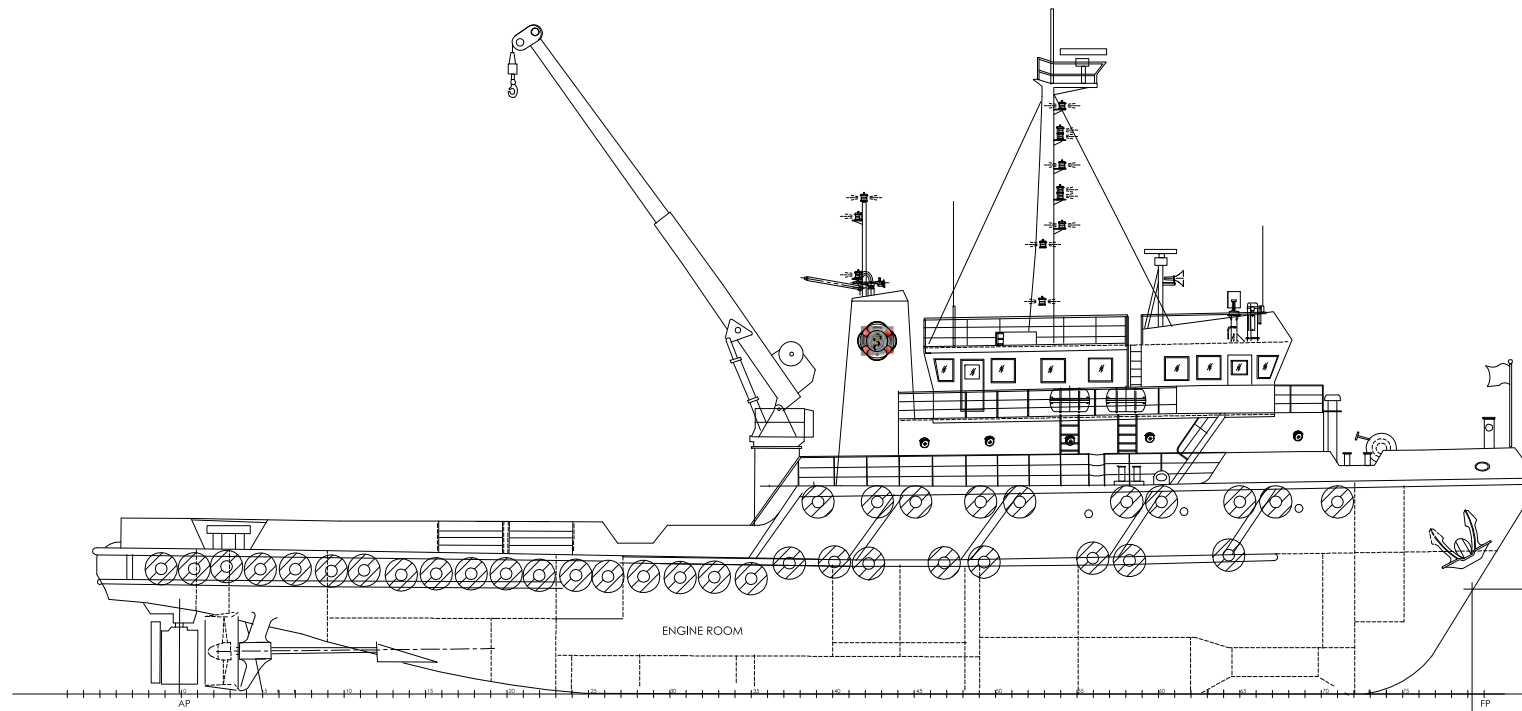


*All vessel details are presented herein in good faith and are believed to be correct at time of publication. Vessel specifications are subject to change without notice. Revision date 22 November 2010.*

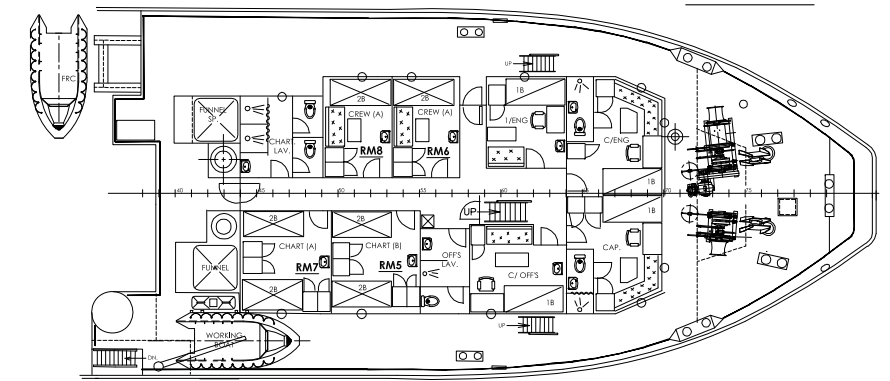
Mermaid Offshore Services Ltd. is a leading provider of Subsea Support Services to the Oil and Gas Industry. We provide diving and ROV support vessels, saturation and surface diving, ROV, subsea inspection, survey and positioning services.

**Enquiries:**  
[mos@mermaid-maritime.com](mailto:mos@mermaid-maritime.com)

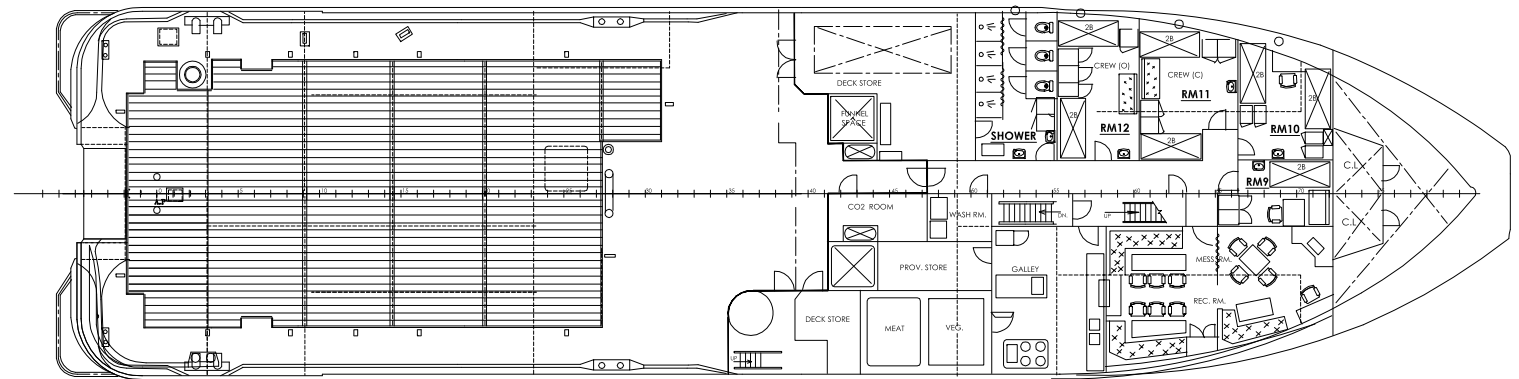
**Website:**  
[www.mermaid-maritime.com](http://www.mermaid-maritime.com)



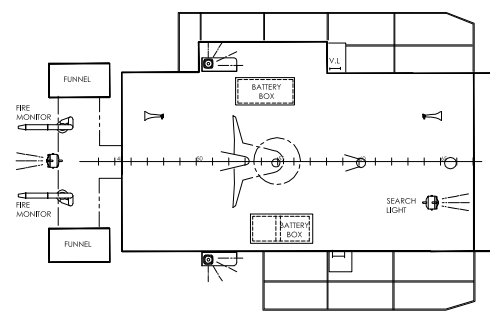
**PROFILE**



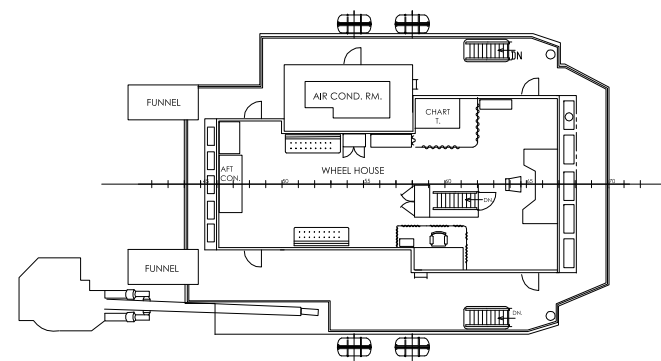
**FORECASTLE DECK**



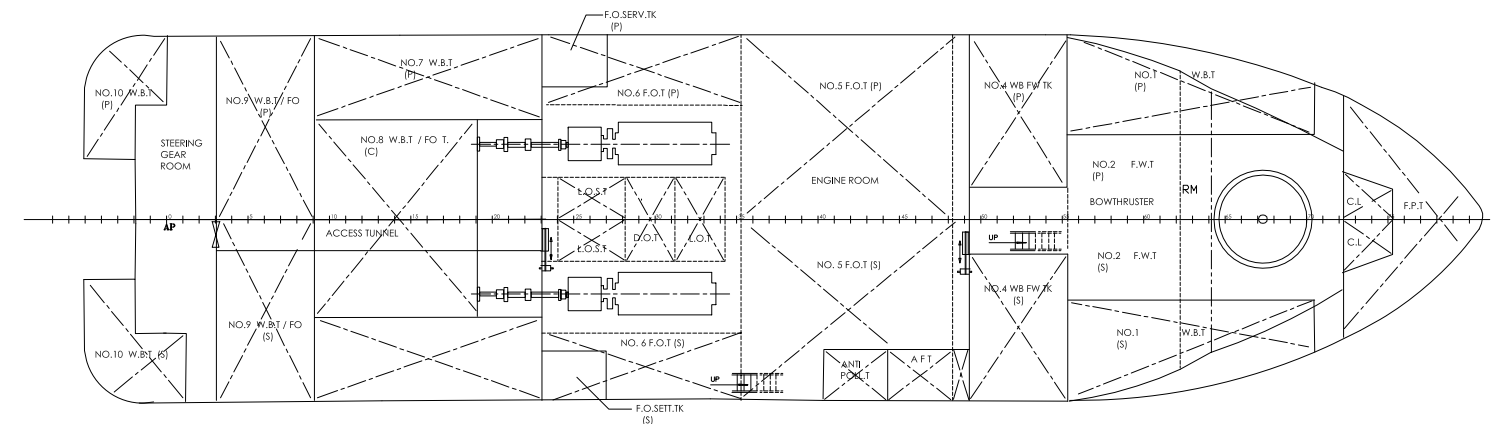
**UPPER DECK**



**WHEEL HOUSE TOP**



**NAV. BRIDGE DECK**



**BOTTOM PLAN**